



Note of Meeting of

Health and Social Care Forum

Thursday 22 January, 2.00pm – 4.00pm

Craig Mitchell House, Flemington Road, Glenrothes

Present:

Kenny Murphy (Chair), Jo Clark, Christine Davison: Fife Voluntary Action

Norma Philpott: CARF

John Stirling: Disabilities Fife

Linda Cruickshank: RNIB

Anne Buchanan: Alzheimer Scotland

George Cuthill: Fife Alcohol Support Service

Debbie Finlayson: British Red Cross

Tam Cassidy: Circles Network

Bert Lumsden: Age Concern Glenrothes

Fiona Smith: Crossroads

John Jones: Express Group

Carol Reddington: Fife Day Care Services

David Paton: Homelands Trust

Frances Howie: Kingdom Housing Association

Irene Blackburn: LinkLiving

Bill Baird: Royal Voluntary Service

Charlie Kirsten: The Richmond Fellowship

Kenny Macrae: Barony Housing Association

Duncan Mitchell: Fife Employment Access Trust (FEAT)

Apologies:

Mark McGeachie: Joint Improvement Team

Eileen McCrossan: Scottish Autism

John McKendrick: Fife Elderly Forum

Jackie Morrison: DPHS

Maggie Wright: Families in Trauma

Integrated Care Fund

Proposals worth over £7 million were submitted to the Integrated Care Fund [ICF]. Fife's total allocation was £6.73 million and therefore not all the proposals submitted will receive funding.

The process was described as challenging and rushed. The Forum had previously discussed submitting a bid which would involve a partnership approach to providing services within a specific locality, working to the ICF principles of co-production, sustainability, locality, leverage, involvement and outcomes, however the very limited timeframe in which detailed bids were required to be submitted precluded the third sector from being able to collaborate on a potential submission. Kenny has reported the frustrations felt by the third sector in Fife, contributing to national research on the experiences across the Scottish Regions.

Due to challenges faced during the process, Fife Voluntary Action (FVA) submitted proposals for the existing Community Interventions Fund (CIF) projects which are currently funded through the Reshaping Care for Older People (RCOP) Programme, as well as the Footcare Fife project FVA are project managing. It was confirmed that four of these projects were not to receive funding from this bid:

- Disabled People's Housing Service (DPHS)
- Fife Employment Access Trust (FEAT)
- Day Centre Services (DSC)
- The Ecology Centre

It is expected that the remaining projects will receive funding through the ICF however this has not yet been confirmed. FVA have committed to working with these projects to develop exit strategies. This is disappointing for the sector as all of the RCOP funded projects have been externally evaluated and have evidenced delivery of positive outcomes for older people in Fife. It was expected that successful RCOP projects would become mainstream funded, however it is unlikely this will happen.

Two six figure sums have been agreed to fund Local Area Coordinators (LACs) and Befriending in Fife. The specifics of these projects are not yet defined but it is assumed that any service will be for all adults as this is the scope of the ICF. As no details have been released for the funding of LACs or befriending it is not clear where this resource will be invested, however all services funded through the ICF have to be up and running by 01 April as the fund is only for one year, it is assumed that more information will be available next month.

There are several other updates on integration; however there is not enough time to cover them all during the Forum. An update is planned and will be disseminated out to the Forum in due course.

Members of the Forum suggest using the capacity of the Forum to attend the wide range of events/conferences taking place around Health and Social Care. Members could attend events and feedback to the Forum.

The Strategic Plan.

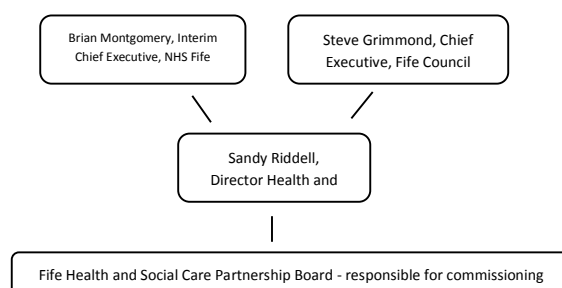
Approximately £350 million worth of services will be commissioned through the new Integration Board. The Strategic Plan will contain the commissioning strategy which will outline how this is to be implemented in Fife. Once the Strategic Plan has been drafted there will be a need to consult and engage with a wide range of stakeholders which will be a key role of the Forum.

This commissioning process is an opportunity for third sector organisations. FVA will be working with partners to input into the discussions so that the commissioning process offers opportunities for the third sector. Kenny is currently working with the legal and contracts teams to help avoid unnecessary competitive tendering, Fife Council have agreed this is not a route they wish to go down.

Guidance for the strategic plan will soon be released by the Scottish Government. FVA will include this in the e-bulletin for members.

Integration Scheme

Seven localities have been approved from the Fife Localities Consultation. These are the same as the current seven Area Committees. The diagram below shows the broad management structure in place for commissioning services.



The Integration Scheme is a legal requirement of all NHS Boards and Local Authorities across Scotland as part of the Scottish Government’s Public Bodies (Joint Working) (Scotland) Act 2014. The Integration Scheme will set out the arrangements for the new joint Health and Social Care Partnership in Fife and the joint health and social care services for which it is responsible. The Integration Scheme has been approved by the Shadow Board.

Kenny started the consultation for the Integration Scheme.

Section 1 – Definitions and interpretation

Asked - What happens to things that are funded at present? Answer - Responsibility will move to the new board

Section 2 – Local Governance Arrangements

Community Health Partnerships (CHPs) will be dissolved, a similar structure will translate to the new scheme – East, West and Central Fife. There is no transition in place between the CHPs being dissolved and a new structure being in place, during this time there will be no governance or accountability.

Section 5 – Clinical and Care Governance

Figure 1 – nothing has changed within the structure and this will pose challenges around data sharing and accountability which is being addressed.

Section 11 – Complaints

NHS and Social Work have jointly responded to complaints in the past and the plan is that they will formalise the process going forward with a single point of contact.

Section 12 – Claims, Handling, Liability and Indemnity

There is essentially no change to how things are currently operating.

Overall comments

The content is vague – lack of detail which is yet to come.

There isn't much for us to comment on as it is an agreement between Health and Social Care.

It looks like nothing has changed.

Joint Inspection Report

Jo presented some key findings from The Care Inspectorate and Healthcare Improvement Scotland joint inspection report to find out how well the health and social work services partnership (between Fife Council and NHS Fife) delivered good personal outcomes for older people and their carers.

Highlights from this report include:

- Quality Indicator 4 – Impact on the community was one of two (out of the ten) evaluated as **Good**.
- Of the nine areas of good practice highlighted on page ten, seven are third sector projects (from the Community Capacity Building Change Funded projects) plus FVA's Footcare Fife project.
- It also recommended that the Fife partnership should ensure its independent, private and voluntary sector partners are enabled to make a positive contribution to all levels to providing positive outcomes for older people.

FVA provided copies of the chapter relevant to the third sector - **Quality Indicator 4 – Impact on the community** (see page 45)

The full Report can be found here -

http://www.healthcareimprovementscotland.org/news_and_events/news/news_joint_inspection_-_fife.aspx

Member Updates

David Paton, Homelands Trust

David updated the group on the facilities available at the Homelands Trust Lundin Links site in Fife. The site offers several fully accessible holiday cottages set in a beautiful location. The organisation has ensured the cottages are accessible for a range of conditions, opening them up to those who may otherwise struggle to find suitable accommodation.

In conjunction with the holiday cottages the drop-in centre on site offers seated exercise classes, short health walks and various other activities. They recently held a successful open day on disabled

access day of which more information can be found here - <http://www.fifetoday.co.uk/news/local-headlines/eye-opening-event-held-at-homelands-1-3667009>

Linda Cruickshank, RNIB

RNIB offer several training courses which aim to raise awareness of vision loss in those with learning disabilities/dementia. RNIB training courses can be found on our website - <http://www.fifevoluntaryaction.org.uk/news.asp?category=Training and Learning>

Date of the Next Health and Social Care Forum – Joint Forum

Date: Wednesday 11 February 2015

Time: 9.30am to 1.00pm

Venue: Room 3+4, Rothes Halls, Glenrothes

Please let Christine Davison know if you are planning to attend. We will be providing lunch and need to know numbers for catering.

To book your place please e-mail Christine@fifevoluntaryaction.org.uk or call 08456 006 042

Forum Feedback

